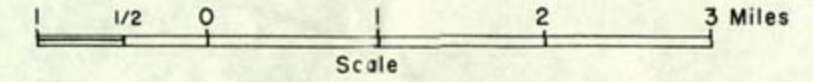
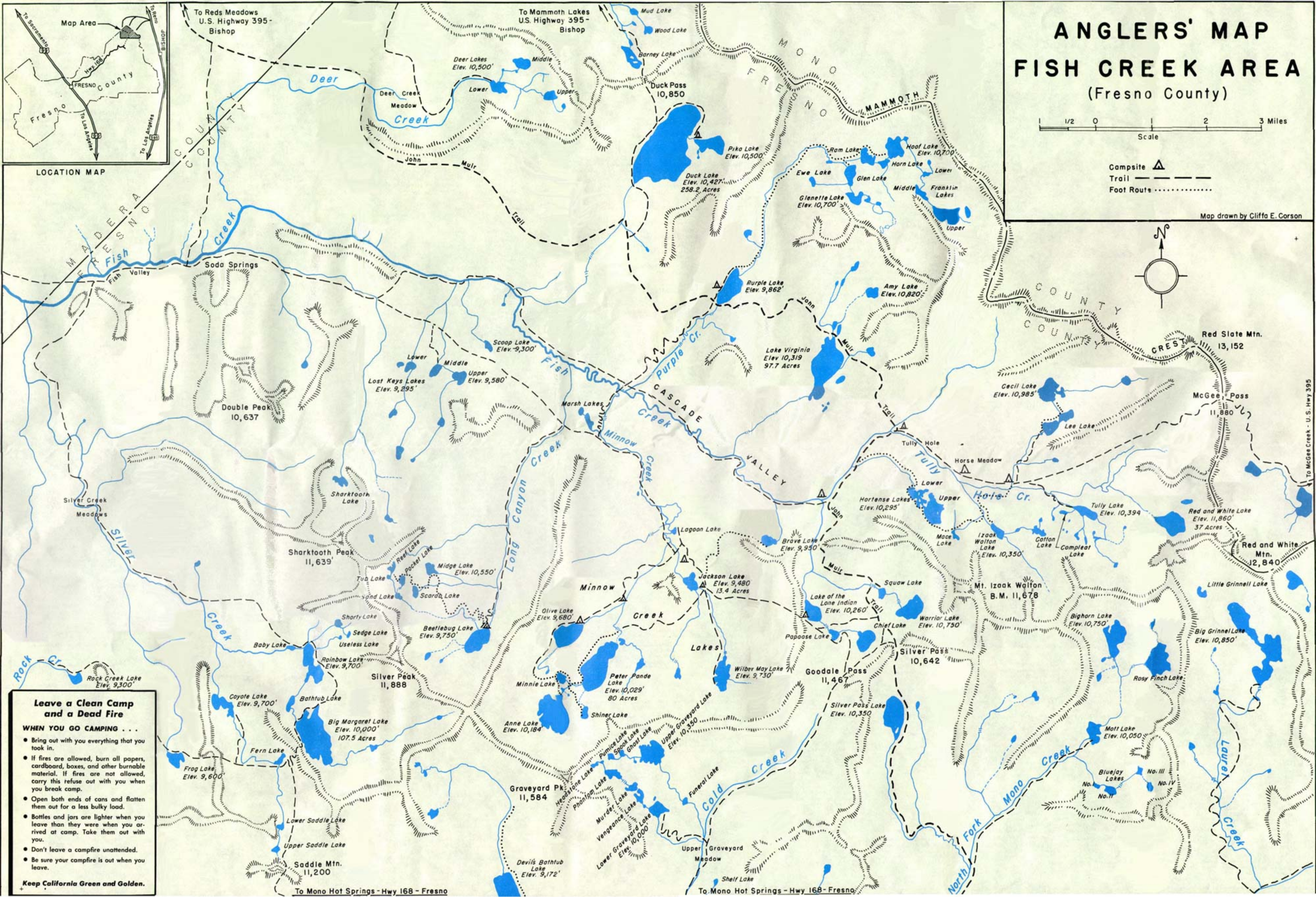


ANGLERS' MAP FISH CREEK AREA (Fresno County)



Campsite
 Trail
 Foot Route

Map drawn by Cliffo E. Corson



LOCATION MAP

Leave a Clean Camp and a Dead Fire

WHEN YOU GO CAMPING . . .

- Bring out with you everything that you took in.
- If fires are allowed, burn all papers, cardboard, boxes, and other burnable material. If fires are not allowed, carry this refuse out with you when you break camp.
- Open both ends of cans and flatten them out for a less bulky load.
- Bottles and jars are lighter when you leave than they were when you arrived at camp. Take them out with you.
- Don't leave a campfire unattended.
- Be sure your campfire is out when you leave.

Keep California Green and Golden.

To Mono Hot Springs - Hwy 168 - Fresno

To Mono Hot Springs - Hwy 168 - Fresno